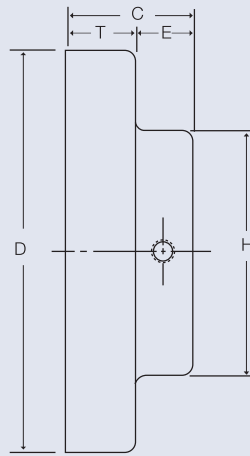
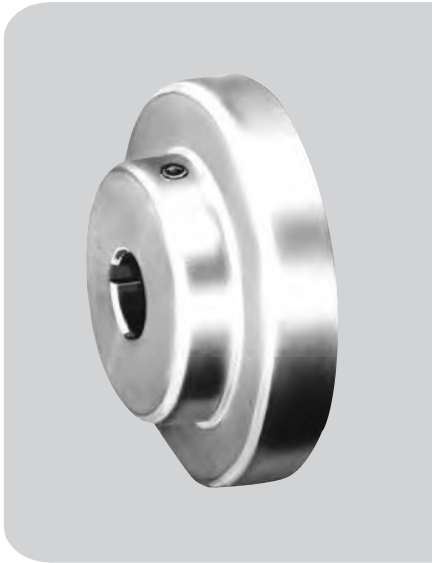


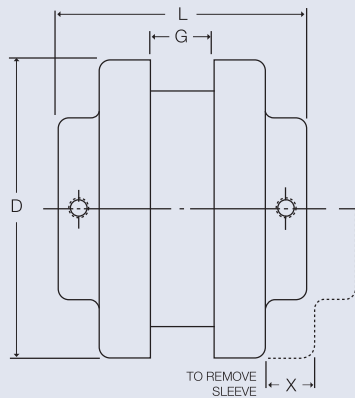
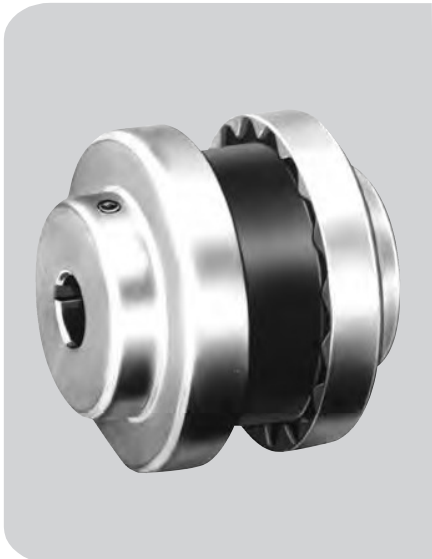
# Type J Sure-Flex® BTS

## For Close Coupled Applications



### FLANGES

Type J flanges sizes 3.4 and 5 are manufactured of sintered carbon steel. The powdered metal manufacturing process provides high dimensional accuracy and uniform material properties for high strength. Size 6 is made of high strength cast iron. All flanges are bored-to-size for a slip fit on standard shafts. The outside diameter of the flange is machined so the surface can be used to check alignment without a special tool. Type J flanges can be used with sleeves of any construction except the Hytrel. Each flange has a keyseat and one (1) setscrew over the keyway. All have a setscrew at 90° from the keyway.



### COUPLINGS

Type J Sure-Flex Couplings are bored-to-size. Normally, they employ the one-piece JE sleeve, or the one-piece JES sleeve with saw cut to permit replacement where there is insufficient gap between shafts.

Spacing between internal flange hubs equals G. Spacing between shafts should be greater than 1/8 in. and less than L minus .85 times the sum of the two bore diameters.

To order complete couplings, specify coupling size with flange symbol (J) giving bore and keyseat. Refer to page F1-3 to order the required coupling.

## DIMENSIONS (in.)

Product No.	Dimensions									Wt. (lbs.)	STOCK BORES*																						
	C	D	E	G	H	L	T	X	(Inches)											Max Bore	Millimeters												
									3/8		1/2	5/8	3/4	7/8	15/16	1	1-1/8	1-3/16	1-1/4		1-3/8	9	11	12	14	15	16	19	20	24	25		
3J	51/64	2.062	13/32	3/8	1-1/2	1-31/32	25/64	5/8	0.3	X	X	X	X	X								7/8	-	X	X	X	X	X	X	X	-	-	-
4J	55/64	2.500	27/64	43/64	1-5/8	2-25/64	7/16	5/8	0.4		X	X	X	X	X	X						1	-	-	-	X	X	X	X	X	X	X	X
5J	1-3/64	3.250	29/64	3/4	1-7/8	2-27/32	19/32	59/64	0.9		X	X	X	X	X	X	X					1-1/8	-	-	-	-	-	-	-	-	-	-	-
6J	1-5/16	4.000	9/16	7/8	2-1/2	3-1/2	3/4	1-3/32	1.2			X	X	X	X	X	X	X	X	X		1-3/8	-	-	-	-	-	-	-	-	-	-	-

\*We do not recommend reboring the 3J and 4J Flanges. See page F1-13 for standard keyseat dimensions & F1-10 for bore tolerances.

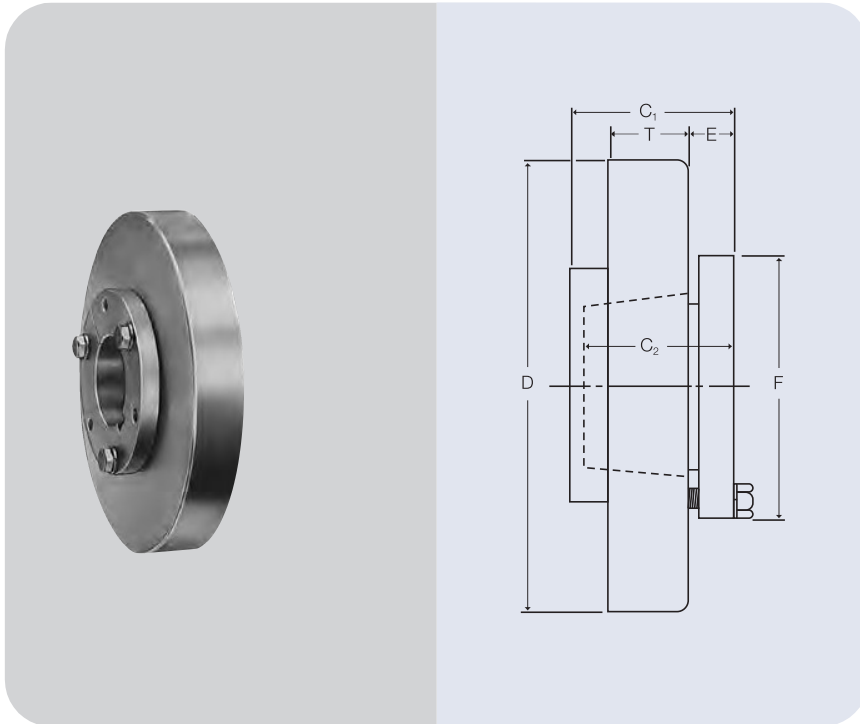
■ Approximate weight for each flange.





# Type B Bushed - Flex QD

## For Close Coupled Applications



### FLANGES

Type B flanges are made of high-strength cast iron the same as Types S, C and SC Sure-Flex flanges. Type B, however, is designed to accommodate Wood's Sure-Grip Bushing for easy installation and removal.

### BUSHINGS

Sure-Grip Bushings offer convenient mounting of the flange to the shaft securely without setscrews. They are tapered and are split through both the bushing flange and taper to provide a clamp fit, eliminating wobble, vibration and fretting corrosion. This is the same bushing used in Wood's sheaves and pulleys and is readily available everywhere.

### Dimensions (in.)

Product No.	Bushing Required	Dimensions									Max. * Bore	Flange	Weight (lbs.) ■ Bushing
		C <sub>1</sub>	C <sub>2</sub>	D	E	F	G	L	T	X			
<b>6B</b>	JA	1-7/32	1	4.000	15/32	2	7/8	3-3/8	25/32	1-3/32	1-1/4	1.4	.8
<b>7B</b>	JA	1-5/8	1	4.625	15/32	2	1	3-1/2	25/32	1-5/16	1-1/4	1.9	.8
<b>8B</b>	SH	1-29/32	1-1/4	5.450	9/16	2-11/16	1-1/8	4-1/16	29/32	1-1/2	1-5/8	2.9	1.0
<b>9B</b>	SD	2-1/4	1-13/16	6.350	5/8	3-3/16	1-7/16	4-3/4	1-1/32	1-3/4	1-15/16	4.8	1.5
<b>10B</b>	SK	1-15/16	1-7/8	7.500	23/32	3-7/8	1-5/8	5-1/2	1-7/32	2	2-1/2	7.8	2.0
<b>11B</b>	SF	2-3/16	2	8.625	11/16	4-5/8	1-7/8	6-1/4	1-1/2	2-3/8	2-15/16	12.0	3.5
<b>12B</b>	E	2-23/32	2-5/8	10.000	29/32	6	2-5/16	7-1/2	1-11/16	2-11/16	3-1/2	18.0	9.0
<b>13B</b>	F	3-3/4	3-5/8	11.750	1-1/16	6-5/8	2-11/16	8-3/4	1-31/32	3	3-15/16	31.2	14.0
<b>14B</b>	F	3-3/4	3-5/8	13.875	1-1/16	6-5/8	3-1/4	9-7/8	2-1/4	3-1/2	3-15/16	51.4	14.0
<b>16B</b>	J	4-13/16	4-1/2	18.875	1-1/4	7-1/4	4-3/4	12-3/4	2-3/4	4-1/4	4-1/2	120.0	22.0

\* Maximum bore with keyseat. ■ Approximate weight for each flange.

# Type B Bushed - Flex QD

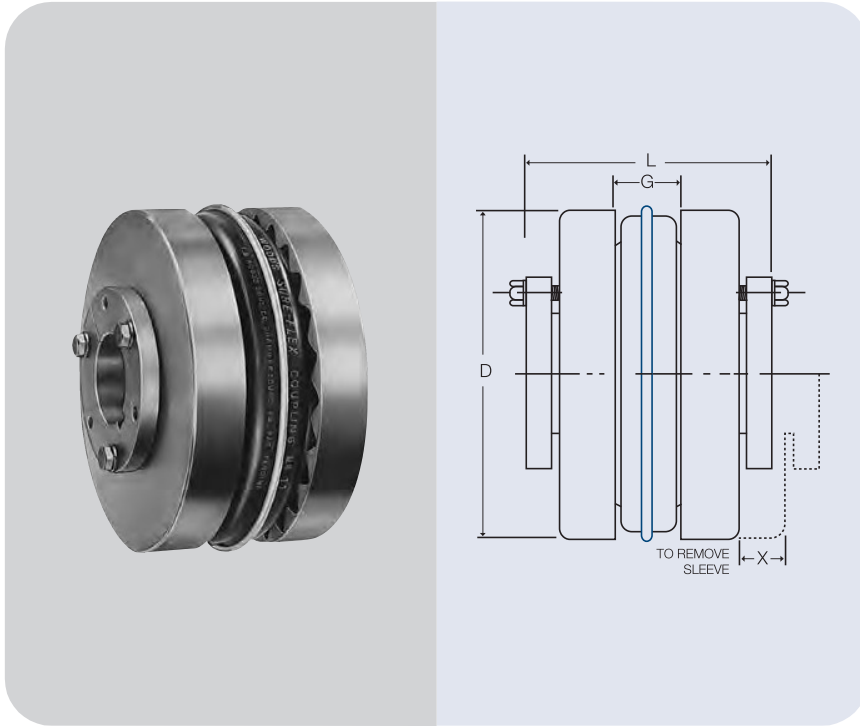
## For Close Coupled Applications

### COUPLINGS

Type B Sure-Flex Couplings are normally supplied with the two-piece E sleeve, and can use any EPDM or Neoprene sleeves. DO NOT use Hytrel sleeves with Type B couplings.

Spacing between internal flange-hubs equals L minus 2 times C. Spacing between shafts should be greater than 1/8 in. and less than G.

To order complete couplings, specify coupling size with flange symbol (B) and bushing. Refer to page F1N3 to order the required coupling. Refer to charts below for bushings.



### SURE-GRIP® BUSHING KEYSEAT DIMENSIONS (in.)

Bushing	Bores	Keyseat	Bushing	Bores	Keyseat
<b>JA</b>	1/2 – 1	Standard ②	<b>SF</b>	1/2 – 2-1/4	Standard ②
	1-1/16 – 1-3/16	1/4 x 1/16		2-5/16 – 2-1/2	5/8 x 3/16
	1-1/4	1/4 x 1/32		2-9/16 – 2-3/4	5/8 x 1/16
		2-13/16 – 2-7/8		3/4 x 1/16	
<b>SH</b>	1/2 – 1 3/8	Standard ②		2-15/16	3/4 x 1/32
	1-7/16 – 1 5/8	3/8 x 1/16	<b>E</b>	7/8 – 2-7/8	Standard ②
	1-11/16	No K.S.		2-5/16 – 3-1/4	3/4 x 1/8
		3-5/16 – 3-1/2		7/8 x 1/16	
<b>SD</b>	1/2 – 1-11/16	Standard ②	<b>F</b>	1 – 3-1/4	Standard ②
	1-3/4	3/8 x 1/8		3-5/16 – 3-3/4	7/8 x 3/16
	1-13/16	1/2 x 1/8		3-13/16 – 3-15/16	1 x 1/8
	1-7/8 – 1-15/16	1/2 x 1/16	4	No K.S.	
<b>SK</b>	2	No K.S.	<b>J</b>	1-7/16 – 3-13/16	Standard ②
	1/2 – 2-1/8	Standard ②		3-7/8 – 3-15/16	1 x 3/8
	2-3/16 – 2-1/4	1/2 x 1/8		4 – 4-1/2	1 x 1/8
	2-5/16 – 2 1/2	5/8 x 1/16			
	2-9/16 – 2 5/8	No K.S.			

### ② Standard Keyseat Dimension

Shaft Dia.	Width	Depth
1/2 – 9/16	1/8	1/16
5/8 – 7/8	3/16	3/32
15/16 – 1-1/4	1/4	1/8
1-5/16 – 1-3/8	5/16	5/32
1-7/16 – 1-3/4	3/8	3/16
1-13/16 – 2-1/4	1/2	1/4
2-5/16 – 2-3/4	5/8	5/16
2-13/16 – 3-1/4	3/4	3/8
3-5/16 – 3-3/4	7/8	7/16
3-13/16 – 4-1/2	1	1/2
4-9/16 – 5-1/2	1-1/4	5/8
5-9/16 – 6-1/2	1-1/2	3/4